

INSIDE THE FESTIVAL

Juried Visual Arts	2
Points of Entry	3
Public Art	5
PPG Place	6
Children's Area	7
Performing Arts	8
Artists Market	14
High School Banners	14
Acknowledgments	15
What's Happening	16

Three Rivers

ARTS

JUNE 7-23, 1996

PITTSBURGH

Festival

Pittsburgh is like a big fort. Geographically it's bound by a highway which goes all around the city. So before you get to Pittsburgh you can't see it. Usually you can see a city five or ten minutes before you arrive--but not here. It's very separating.

Once I made drawings of the paths people took through downtown on their lunch hours. I would sketch these little maps to see if there was any important shape or hidden meaning in the routes people took.

Part of my experience is that some of my family lived in the city so I grew up half there and half in the suburbs--and there's a big difference between them. In the city you can get away with so much more, there's less cops and so many people just hanging out on the street corners. The ratio of cops to kids is high...they watch you nonstop. The city cops don't care what you do because they got bigger things to deal with. The city represents a lot more freedom, an in-between place where you can get away with things out in the open you wouldn't do in the suburbs.

You know the problems in big cities today--how people go out and live in the suburbs and never come back. They come here 9 to 5 but they don't come in on the weekends and this draws them back. Festivals are what every city wants to do so its' citizenry will realize the city is a good place to live and have a good time, not just a place for work. It changes downtown. It's obviously valuable to the human condition, but also in terms of money for the city. When they come they spend downtown: they have to park, they go to stores, they go to McDonald's. Think about it, we spread out all over so they're going to walk all over downtown--the exposure is great. The city knows. Believe me, the city knows it.

WELCOME

Welcome to the 1996 Three Rivers Arts Festival. Each year, for 37 years, the Festival has presented contemporary visual and performing arts programming free to the people of this region. We are particularly proud that the 1996 Official Festival Program is a part of the Pittsburgh Post-Gazette Weekend Section. I hope you will enjoy reading about Festival exhibitions, performances, and children's activities, and that you will bring this program with you to the Festival as your official guide to our event. Festival exhibitions include a wide variety of special projects, ranging from artists who have chosen to address issues of political and social importance to those who turn inward to explore their own dreamscapes. Our performances include music, dance, theater and performance art; and our goal is to provide opportunities to sing along when you know the words or to take a risk with something new and different if you choose. Because we present the work of artists of our time, the Festival includes artists who choose to challenge the boundaries of what constitutes artmaking. I believe we capture the true spirit of our community by offering programming that reflects a variety of cultures and points of view within a context that is both proud of its common values and tolerant of diverse ideas and experimentation. On behalf of the staff, the Festival Committee, and all of the participating artists, let me extend my sincere welcome and our hope that you enjoy this year's event.

Jeanne Pearlman
Executive Director

GROUP MATERIAL

The quotations and underlying images running throughout this program guide were compiled by Group Material as our contribution to this year's public art component of the Three Rivers Arts Festival, *Points of Entry: A Community Based Public Art Project*. We have integrated the Festival's schedules and information with a constructed 'dialogue' from interviews conducted spontaneously on the street, during a radio call-in program, and from scheduled discussions in homes and offices. Several excerpts are reproduced from previous writings by architects, critics, and designers. All texts are represented anonymously to de-emphasize attributes normally used to categorize identity—such as location of residency or institutional affiliation—and instead highlight actual statements.

The questions we raised with interviewees were largely about their experience using the city, neighborhoods and public spaces, recent relevant changes, personal and collective histories, functions of urban festivals and the cultural, corporate, and consumer entities that administrate, support and visit such events. The linked fragments can be read as a textual chain that was not conducted as a dialogue in real time, but should convey a logic of interconnectedness between topics.

As 'community' and 'public' are amorphous terms it is crucial to question the ideological underpinnings and context as well as the character of social constellations at work when they are invoked. Given recent trends toward professionalization of community-based art alongside privatization of public space, we decided to investigate 'community' term in relation to the festival itself.

Our project is not a sociological or scientific survey, nor is it a random sampling of Pittsburgh residents and there is no pretense of objectivity here. The overarching goal of the project is to introduce unarticulated perspectives and voices into the official festival arena and to construct a picture of 'community' and 'the city' as indeterminate and contested by introducing unexpected observations, critiques and agendas.

Group Material is a New York based collective that investigates interrelationships between aesthetics and politics.

JURIED VISUAL ARTS

The Juried Visual Arts Exhibition continues to be one of the Festival's most popular programs. This year's Juried Exhibition features artists from 11 states and the District of Columbia. The largest number of artists comes from Pennsylvania, with 38 Pittsburgh artists represented. The Festival would like to thank this year's jurors:

Two-Dimensional Art	<i>Dan Cameron</i> Senior Curator New Museum of Contemporary Art New York
Sculpture	<i>Michael D. Olijnyk</i> Curator of Exhibitions Mattress Factory Pittsburgh
Crafts	<i>Michael W. Monroe</i> President Peter Joseph Gallery New York
Photography	<i>Clarissa Sligh</i> Photographer and Installation Artist New York
Video	<i>Mary Ellen Strom</i> Independent Video Maker, Performer and Teacher New York

The Best of Show in Crafts Award is underwritten by the Galbreath Company, USX Tower. All artwork in the Juried Exhibition is for sale. Please call the Festival office at 261-7040 or visit the Festival Information Booth on Liberty Avenue to inquire about purchasing an artwork. Also, catalogs describing all of the works in the Juried Exhibition are available for sale at the Festival Information Booth.

Two-Dimensional Art	Yellow Pavilions on Gateway Center Plaza 4r
Sculpture and Crafts	Lobby, USX Tower, 600 Grant Street
Photography and Video	The Wood St. Galleries, 601 Wood Street

City planners now know they have to be a little creative about what they do. They can't simply plow over neighborhoods anymore the way they used to. They have to at least use the word community. They can't just make decisions unilaterally anymore. I don't know if actual planning has really changed that much—but the techniques certainly may appear to folks to be more inclusive.

Many cultural institutions will lose their credibility if they don't develop community-based initiatives. Art may have appeared very exclusive but it is now a way for organizations to appear to have an interest—a stake in representing community concerns. The predicament is that nonprofits are in crisis right now. As government funding becomes scarce they have to look for support in other areas. So, suddenly these groups realized they need to develop community constituencies.

POINTS OF ENTRY: A Community-Based Public Art Project of the Three Rivers Arts Festival

Art in Public Places. The term brings to mind generals on horseback, serene green spaces, large monuments to famous heroes or abstract ideas, or architectural structures commemorating classical forms or modern function.

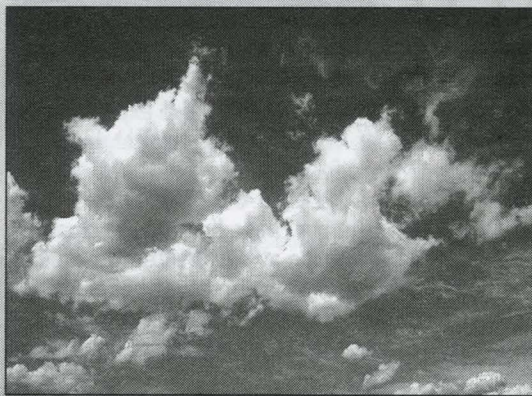
Community-Based Art/Art in Context: Art created by collaborative efforts either in the conception or execution of the artwork. The relationship is no longer simply about space and object, but expands to include those who live and work in these broadly defined spaces we designate as public.

The Three Rivers Arts Festival has become part of the on-going dialogue regarding the nature of public art through our Public Art Program that commissions temporary works of site related sculpture including Nancy Rubins' found object sculpture in the trees in Point State Park (*Another Kind of Growth*, 1988), steelworkers in the park (Luis Jimenez, *Steelworker*, 1991) "Barge Ballets" (Mierle Ukeles, *Towboat & Barge Ballet: Moving on Along*, 1992) and commemorations of survivors of domestic abuse (*Underground*, Suzanne Lacy, 1993).

Points of Entry: A Public Art Initiative in Pittsburgh consists of six projects that have been carried out in communities throughout Allegheny County. *Points of Entry*, developed by the Festival in consultation with Independent Curator Mary Jane Jacob of Chicago, began in 1995 with extended residencies by local and national artists. These residencies provided opportunities for artists to join with community members to address issues of shared concern. During the 1996 Festival, June 7-23, works of public art that reflect the artists' experiences within the community settings will be exhibited.

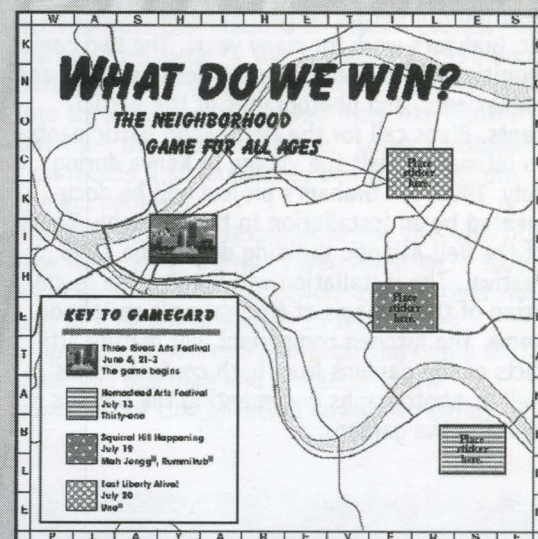
Group Material, an artists collective from New York City, focused their work on a series of interviews of people in Pittsburgh in an effort to retrieve their memories of this region and their thoughts on the organization and planning of urban environments. Group Material's research appears as a publication that serves as the Guide to Festival Programs for 1996.

Ann Carlson, choreographer and performance artist from New York City, is working with healthcare professionals at Magee Women's Hospital to explore the life cycle of women as they engage and navigate the healthcare system in a women's hospital. Healthcare workers deliver frontline services to women facing reproductive health issues ranging from high risk pregnancy to cancer to menopause. In this context, they engage some of the most critical issues facing our society. Yet, these women represent a largely neglected voice in political debates. Initially, Ms. Carlson held two community meetings at Magee Hospital where she met with large groups of healthcare workers to explore issues of concern. During the past six months, she spent time at the hospital "shadowing" women from various departments as they carried out their duties during the course of a day. This has helped to frame the dialogue of how the healthcare crisis impacts these women and will provide a basis for the ultimate creation of an artwork to be presented in the Spring of 1997. During the next ten months, Ms. Carlson will continue to make one week-long visit per month to the hospital. Over the final weekend of the 1996 Festival (June 21-23), Ms. Carlson will create an installation in Point State Park to serve as the official kick-off and celebration of the second phase of her residency.



WHAT DO WE WIN?

Michelle Illuminato, of Madison, Wisconsin, formerly of Pittsburgh, has focused on the issue of aging by exploring how older women in a variety of situations form social networks that provide support and a sense of belonging. She has chosen three communities in Allegheny County: Squirrel Hill, East Liberty, and Homestead where she worked with the Jewish Community Center, Vintage, and New Heritage, Inc. The artist discovered that one of the primary focuses of social networking for the women she interviewed was playing games in small groups. The games were quite varied and included card games, bingo, and other table games. During the game playing, the women found the opportunity to form "alternative families" and developed a significant support system within the context of the game. Ms. Illuminato's project will continue throughout the summer and will involve extending the game playing activities at the three major summer community events that take place in July in Squirrel Hill, Homestead, and East Liberty. At each festival, there will be an opportunity to meet older adult women from the community and learn their favorite games. What do we win? encourages participants to explore the social benefits of game-playing, moving out onto their larger community "gameboards."

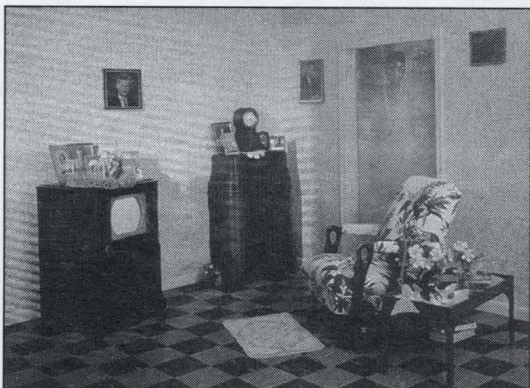


Many officials are using the vocabulary of community. This kind of thing reminds me of Pat Buchanan quoting Martin Luther King. He said, something like; as a presidential candidate he "wants color blindness and this is what Dr. King wanted." So much of the language common in the sixties in the civil rights movement is now used by conservatives. It's being absorbed. Today you can justify dislocating people by using a language of inclusivity.

POINTS OF ENTRY: A Community-Based Public Art Project of the Three Rivers Arts Festival

LIVING IN A SPIRIT HOUSE/THE AFRICAN-AMERICAN GARDEN PROJECT

Lonnie Graham, of Pittsburgh, has created a project entitled the African-American Garden Project, which will re-establish a vital link between an African village and an American community. Two community gardens have been developed with the cooperation of the Western Pennsylvania Conservancy. The first project has enlisted a group of women who represent the constituency served by the Alma Illery Medical



Center on Tioga Street in Homewood. The women have developed and planted a garden in a plot of land next to the Medical Center. A second community garden has been established at a site on Hamilton Avenue. At the same time, a garden is being established in Mugaga, a village near Nairobi Kenya, which has been a site for Mr. Graham's work for many years. The two communities will exchange garden designs, tools and implements, and photographs of the participants. Plans call for the Homewood participants to ultimately visit the village in Kenya during July, 1996. Mr. Graham's project will be documented by an installation in the Assembly Room of the Bell Atlantic Building during the 1996 Festival. The installation will involve the re-creation of three rooms of Mr. Graham's childhood home. The Kitchen component will feature artifacts of the gardens from both continents, as well as photographs documenting the process of creating the gardens.

AN INVISIBLE LIFE: A VIEW INTO THE WORLD OF A 120-YEAR OLD MAN

Fred Wilson, of New York City, has focused his work in Pittsburgh around the theme of an exploration of memory through bringing to light the hidden histories of marginalized racial, social, and political groups. Wilson has been working with people from the local community to explore facets of Pittsburgh's history during the artisti-



cally rich and socially turbulent 1930's. The artist's site visits have consisted of working with community collaborators through documenting oral histories and archival research. Like his well-known installation, Mining the Museum, at the Maryland Historical Society—Baltimore (1992), Mr. Wilson has "mined" Pittsburgh's social and cultural history to re-create a web of places and people who shaped the cultural landscape of their time, yet whose lives may have been invisible, even to their contemporaries. These experiences will emerge in Mr. Wilson's project through the recreation of the life and work of Baldwin Antinous Stein, a 120-year-old photographer and world traveler, who may have lived in Pittsburgh in the 1930's in a home at 939 Western Avenue. The house, a historical dwelling that belonged to the Rhodes family, was built in the middle to late 1860's by Joshua Rhodes, a prominent, 19th cen-

tury, Pittsburgh industrialist. The artist will use a variety of media including video and sound, as well as the display of artifacts from Baldwin's life in Pittsburgh in the 1930's. All of these, from the special effects to the paintings, photographs, books, and other items, will provide clues to the remarkable life of Baldwin Stein. Each day during the Festival, visitors will be invited to tour the house, guided by trained docents who will tell the story of the Rhodes family, as well as talk about Baldwin's unique contribution to local history. Tour hours are 12 p.m. to 6 p.m. For tour information, call 261-7040.

FREE TO THE PEOPLE, SELF PORTRAITS WITH TEXT CREATED BY INMATES ON PENNSYLVANIA'S DEATH ROW.

EMBASSY OF CRITICAL THINKING STANDARDS OF CIVILIZATION, A NINE-MONTH PROJECT WORKING IN COLLABORATION WITH 15 STUDENTS.

Daniel J. Martinez, of Los Angeles, California, designed a project wherein he simultaneously engaged two very diverse communities throughout the course of his year-long residency. For the period between September, 1995 and June, 1996, Mr. Martinez engaged in a collaborative letter writing and drawing project entitled Free to the

free to the people

a collaborative letter writing
£
drawing project between
Daniel J. Martinez
£
15 inmates on death row
in the state of Pennsylvania

Leslie Charles Beasley AM-5208
Jerard Bradley BQ-6128
Daniel Crispell BH-8972
Jermont Cox CE-8242
Anthony Fletcher CA-1706
Thomas J Gorby AJ-3166
Harrison Graham AS-0978
William Gribble CC-7649

Kevin J Marinelli CT-9974
Anthony Paoletto CC-8183
Delores Rivers 008626
Melvin Speight Jr. CC-6923
Andre Stevens CC-0246
William Tilley AY-9893
Robert Wharton AY-6874

a situation is under control only when members of a society agree to abuse or to be abused by it's rules of operation.

a operation is out of control when members of a society disagree on their situation.

members of a society are a disposable commodity that can be bought, sold, and tossed away.

I want to know why all of a sudden there is all this interest in the community. Why now, at this particular time, when you were not interested in us before. What are your motives? What are your hidden agendas? Why is there this trend?

I think urban redevelopment cut off the people on The Hill like a dead arm. And if that's not enough, they go on to make Penn Circle something that would change the entire face of East Liberty. I know that they knew that would happen.

I'm a perfect example of a Pittsburgh guy of the 20th century. I'm 31 years old, went out of town for college, and came back here because it's a great place to raise a family—low cost of living, comfortable. It's a town of two and a half million people but the culture is such that people treat it like a small town,

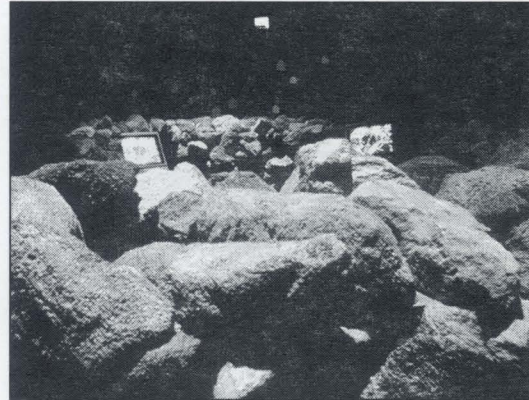
PITTSBURGH

A ROCK AND A HARD PLACE

An Installation by Terry Berkowitz

Terry Berkowitz has transformed the The Wood Street Galleries second floor into a multi-media installation that addresses the Middle East, specifically the West Bank and Gaza and its ongoing political and social strife. As you enter the Gallery, you will encounter Berkowitz's environment of objects, sounds, and video images that conjure up a site "between a rock and a hard place"—Gaza and the West Bank where Palestinians live. In these times of turmoil and hope in the Middle East, Terry Berkowitz is asking us not to forget who we are and those faces and voices with whom we share the world we live in.

Terry Berkowitz lives and works in New York City.



The Wood Street Galleries Hours, June 7-23, 12 noon to 8 p.m.

Programming at the The Wood Street Galleries is underwritten by a grant from the Howard Heinz Endowment.

Special Thanks to The Pittsburgh Cultural Trust

PUBLIC ART IN POINT STATE PARK

Boat as Metaphor: Sculptural Interpretations

Festival visitors will find a variety of beautiful and intriguing works of public art in Point State Park at this year's event. We are pleased to present the work of two of the artists from the Boat as Metaphor Project, organized in collaboration with the Three Rivers Rowing Association, as part of the Festival's Public Art program. (Read more about Boat as Metaphor on page 6)

Karen Gilg, of Gardiner, Maine, has created *Spirit Crossing*, which includes a straw and bulrush boat, a straw figure, and six poles, and reminds us of the sense of adventure that caused those early travelers to take to the waterways.

Ragnhild Reingardt, of Brookline, Massachusetts, has brought her installation *WHITE MARKING: SURFACE SAIL*, a celebratory journey, to Point State Park. Visitors will immediately be captivated by the 49 white sailcloth units placed in a triangular form near the fountain as they respond to the natural conditions of air, wind, rain and light.

Pittsburgh Artists James Loney and James Shipman Enliven Point State Park with Commissioned Works of Public Art.

James Loney's new work, *Estuary*, located in the grove of trees adjacent to the "finish line" continues his exploration of site driven works derived from observations of natural events. The work is a response to the January 20, 1996 flood during which "Point State Park was transformed into something which looked more like Hudson Bay than the Golden Triangle." Loney's installation recalls that fateful day and its impact on the environment.

James Shipman responds to the site with his new work, *King, Warrior, Lover, Magician*, a steel and clay sculpture that towers over Festival visitors at a height of almost 15 feet. James Shipman's work creates an imposing figure that stands as guardian and protector of the panorama of this beautiful downtown park.

You can see the geography of segregation. In the seventies Pittsburgh went through an integration process that was largely successful. There was non-violent, well supported integration in public schools. It was a well-designed program. Recently there was a reaction from people who wanted a community school without strangers coming in. There was a re-initiation of neighborhood school programs so that they wouldn't have the kind of districting which would impose integration.

The Northside has been given a very bad reputation by the media in the past few years—it isn't as defined as other Pittsburgh communities. People think of the Northside as a very large area so if you look at crime statistics they appear to be unusually high. This is for propaganda sake because they want to do a lot of development over there. You've got enticement there for those who are trying to convert the area. This is similar to the process of turning Downtown into someplace more hospitable. So they make it worse than it actually is. Then there's some tax incentive to clean it up.

The mission is to attract and create special events for the purpose of creating vitality in downtown Pittsburgh with a long term goal of having Pittsburgh recognized as a tourist attraction. This is funded by the county hotel/motel tax...the goal is heads in beds. The idea is you want to develop multiple days events that would bring people in, that can be marketed in advance. They should be reoccurring so that they're predictable.

6 THE FESTIVAL AT PPG PLACE

Watermarks, PPG Plaza

Water—it is around and within us. And after the flood of 1996, water is very much on our minds as we are faced with the power of our regional rivers. At PPG Plaza, we begin the transformation by inviting artists to create two-dimensional work around the theme of boats and water.

Watermarks includes the work of 19 artists whose work addresses the issues of water in all of its many forms. From the quiet and serene to the turbulent and powerful, water impacts the quality of life everywhere on the planet.

Participating Artists

Seth Dickerman, Pittsburgh
Photography

Courtesy of Concept Gallery

Daniel Goldstein, San Francisco
Watercolor and Collage

Courtesy of Concept Gallery

Greg Kwiatek, Hoboken
Paintings

Courtesy of Concept Gallery

Constance Merriman, Pittsburgh
Environmental Artist,

Painting and Drawing

Courtesy of the Artist

Lisa Tarkett, Pittsburgh
Charcoal Drawings

Courtesy of Lascaux Gallery

Photographers from the Pittsburgh Post-Gazette

John Beale

V.W.H. Campbell

Bob Donaldson

Matt Freed

Nathaniel Guildry

John Heller

Joyce Mendelsohn

Annie O'Neill

Robert Pavuchak

Martha Rial

Robin Rombach

Darrell Sapp

Andy Starnes

Bill Wade

Tony Tye

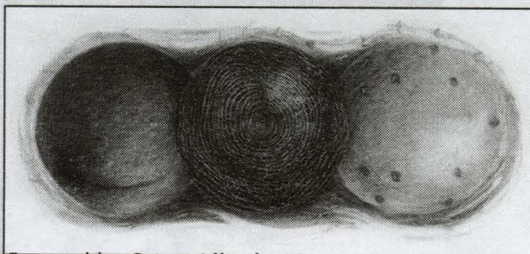
Parallel Visions, PPG Wintergarden

Curated by: **Kristina Olson**, Curator,
Mesaros Gallery, West Virginia University
Exhibition Organizer: **Janet Towbin**

Dreams provide the basis for the works of these twelve Pittsburgh artists that ask you to peek into dark chambers, pass through hallways, and make a journey into a dream temple. *Parallel Visions* marks the second time most of these artists have worked together, reuniting them after their highly successful 1994 project, *Alchemy*.

The participating artists for *Parallel Visions*:

Margaret Baco	Gregg Liberi	Kathleen Mulcahy
Lynne Cannoy	James Loney	Rise Nagin
Phil DeLucia	David A. Ludwig	Janet Towbin
Ron Desmett	Jean McClung	Michel Tsouris



Interval by Gregg Liberi

Programming at PPG Place is underwritten by a grant from PPG Industries, Inc

The Boat As Metaphor: A Sculptural Interpretation

The Three Rivers Arts Festival is pleased to have been invited to be a site for an exhibition of new works of public art, *The Boat As Metaphor: A Sculptural Interpretation* organized by the Three Rivers Rowing Association.

The participating artists have created works that represent the idea of the boat in all of its many forms, from the ancient to the most modern. Across many cultures, boats are symbols that link people with both the comfort of home and the excitement and adventure of travel and exploration. After a national call for entries, Jurors Vicky Clark, James Shipman and Alice R. Synder selected thirteen artists to participate in *The Boat As Metaphor*, five of whom will have their work exhibited at this year's Festival. Three of the pieces created for the Festival can be found at PPG Place, one of Pittsburgh's most recognizable (and waterless) landmarks. Two more are located in Point State Park.

Kathleen Mulcahy and Ron Desmett, of Pittsburgh, bring their remarkable work to PPG Place through a cast glass and mixed media seat that expands on the traditional visual notion of boats. On close inspection the visitor will see floating objects inside the cast glass form.

Greg Shelnutt, of University, Mississippi, has created *Safe Passage for Stephen Callahan*, a brazed steel and sewn rubber installation that commemorates the rubber life raft, "Rubber Ducky, III," in which explorer Stephen Callahan survived at sea for 76 days. The piece will transport the viewer from the center of Pittsburgh's urban landscape to the desolate loneliness of being lost at sea.

Bryan E. Steinberg's recent ceramic work focuses on contemporary sculptural vessels that will remind the Festival visitor of industrial and mechanical objects. The vessels arise, according to the artist, from memories and influences of his childhood in Titusville, Pennsylvania, where the pipes, wells, and storage tanks of the oil industry are an integral part of the rural landscape. Brian lives and works in Lake Charles, Louisiana. *The Boat As Metaphor* project includes eight additional artists whose works are exhibited at Washington's Landing from June 7 through July 14. Call the Boat as Metaphor Hotline for more information at 231-2388.

The Boat as Metaphor was underwritten by a grant from the Howard Heinz Endowments.

I think the Three Rivers Arts Festival is a way to get more people downtown. To utilize the space and utilize the Point. People respect it as a cultural happening in the summer. I don't know if I would view it that way. It seems to focus more on having a marketplace where local artists and crafts people can sell their goods. I guess it's just some way to create a sort of community in Pittsburgh, as well as trying to bring some artists from outside into the area and incorporate local artists into some sort of larger art scene.

They have really good food. We go to the festival for the food. Usually my wife buys something for the house. We have a new house and we have nothing, no paintings on the walls. So we are trying to put something up.

GIANT EAGLE CHILDREN'S AREA (located on the Fountain side of Point State Park)

Hours are: 12 noon to 5 p.m. June 7-23. This year's projects feature hands-on participatory activities including the following:

Celebrate the Pirates by being part of the Much LARGER Than Life Baseballs at the Three Rivers Arts Festival



Celebrate the baseball season and salute our Pittsburgh Pirates by putting your unique greeting on the Festival's baseball sculptures.

Let's Make Hanimals!

We've all heard of face painting, but at this year's Festival, kids will be able to paint unique faces on their hands to create a very personal—and portable—hand puppet. Come on down to the Giant Eagle Children's area to meet some very interesting and intriguing Hanimals! and to try this unique and fun idea with your kids.

Celebrate the Opening of the Senator John Heinz Pittsburgh Regional History Center

Pittsburgh is celebrating our traditions and our history with the opening of the Senator John Heinz Pittsburgh Regional History Center. The Festival wants to be a part of this very important occasion by offering Festival children the opportunity to commemorate their own history on the Festival's closing weekend. We will create the "Festival History Wall" and ask kids and their families to paint something that commemorates someone from their personal history on a 4" x 4" wooden plaque. These plaques will be attached to the wall in the Children's Area.



Festival Incognito!

Who are those children walking around the Festival in those wacky, wonderful sunglasses? If you want to find out, all you have to do is visit the Giant Eagle Children's Area and see the kids making this fabulous eyewear from die-cut cardboard and colored cellophane. We know every kid in town will want a pair.

Paper Plate Masks

Even the youngest Festival visitors can make something special at this year's Giant Eagle Children's Area. Our Festival art staff will work with our pre-school visitors and their families to make a unique two-sided mask that kids can take home as a souvenir of their visitor to this year's event.

There is no obligation for private institutions to be involved in public culture. As private people they can choose to do whatever they want. Anybody has a right to choose. You can choose to do anything you feel like—that's the thing about living in the U.S. But in terms of whether or not you want to go into public things: that's why you can vote. For instance you are for the NEA or you are against it. Some cities have a certain percentage of taxes allocated for art and others don't. That's what America is all about: you get the choice.

Headliners!

FRIDAY, JUNE 7

Point State Park Stage



Maura O'Connell

In times past, they would have billed her as a "chanteuse," but Maura O'Connell is very much a song interpreter of these times. Since her U.S. recording debut 7 years ago, she has applied her luminescent voice to the songs of John Hiatt, Janis Ian, Mary Chapin Carpenter and dozens of other song poets. Multi-platinum record sales and a Grammy nomination have made O'Connell one of the brightest stars in Nashville.

Sponsored by Allegheny County Bureau of Cultural Affairs

SATURDAY, JUNE 8

Symphony Stage

Patti LuPone

Come and Celebrate! The Civic Light Opera's 50th Birthday Bash.

Superstar of Broadway, film, and television, Patti LuPone created the roles of Nora Desmond in the world premiere production of *Sunset Boulevard*, and Fantine in the world premiere production of *Les Misérables*. She has won numerous awards including several Drama Desk and Tony Awards, appeared in the feature films *Driving Miss Daisy*, *Witness*, and *Wise Guys*. Ms. LuPone's television appearances include the acclaimed series "Life Goes On."

Sponsored by Civic Light Opera 50th Birthday Bash

SATURDAY, JUNE 8

Byham Theatre, 8:00 pm

Meredith Monk

Inside the Edge Series, See Page 14

SUNDAY, JUNE 9

Point State Park Stage



Saffire-The Uppity Blues Women

From the early years of the blues with Ma Rainey's "Yonder Come the Blues" and Jelly Roll Morton's "Sweet Substitute" to Big Mama Thornton's "Life Goes On", Saffire - The Uppity Blues Women tear into their blues with passion, dedication and originality. They are the torchbearers for the original classic uptight blues women like Bessie Smith and Sippie Wallace. "Saucy, bawdy, roadhouse-style, take-no-guff blues with plenty of brass" *People Magazine*.

Co-sponsored by Calliope/Smoky City Folk Festival

MONDAY, JUNE 10

Point State Park Stage

The Sparks

Contemporary Christian pop/rock at its finest. Greg and Rebecca Sparks are nationally recognized as a unique and gifted husband & wife duo. With several recordings to their credit, a 1992 Dove nomination and extensive touring with Russ Taff and Bryan Duncan, Greg and Rebecca are a remarkable voice in Contemporary Christian music.

TUESDAY, JUNE 11

Point State Park Stage

Ethnic Heritage Ensemble

Inside the Edge Series, See Page 14.

WEDNESDAY, JUNE 12

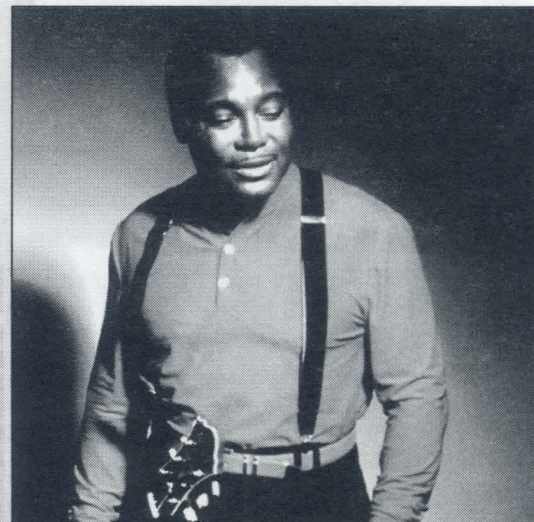
Point State Park Stage

Squonk Opera

Squonk Opera brings a unique theatrical and musical experience to its listeners. From "Night of the Living Dead: The Opera" to not-to-be-missed performances in clubs, theatres, and festivals throughout the United States, Squonk delivers!! Squonk shows combine rock, classical, jazz, funk, Hindustani, and Celtic music for a performance art affair described by the Washington Post as "Debussy meets Godzilla."

THURSDAY, JUNE 13

Symphony Stage



George Benson

with Nathan Davis and the Tomorrow Band. Welcome home the 1996 Mellon Jazz Festival Honoree in a once-in-a-lifetime outdoor concert in beautiful Point State Park. Pittsburgh's favorite son, George Benson, makes a triumphant return to play all the hits that made him a household name from "This Masquerade" and "Give Me The Night" to "On Broadway" and "The Greatest Love of All."

Sponsored by Mellon Jazz Festival

FRIDAY, JUNE 14

Point State Park Stage

Henry Threadgill & Make A Move

Inside the Edge Series, See Page 14.

Co-sponsored by Mellon Jazz Festival

We use all kinds of private places. They are kind enough to let an artist show his or her work in their lobby. It's private property. If they've got an issue or problem with the art, then we don't show it, because it's their property. They have the right to say what will or will not be shown there. You've just got to be realistic about that.

Pittsburgh changed a lot. This used to be a steel city--you know, smoky. Since they got rid of the mill steel business and in mining. So now you see a lot of unemployment. If you are not up with high-tech. There are hardly no jobs here, no jobs at all.

SATURDAY, JUNE 15**Point State Park Stage****Pittsburgh Dance Festival**

A very special presentation of Pittsburgh choreographers and their work. The program will feature a full array of local choreographers and dancers in an exciting and rare opportunity to preview the first annual Pittsburgh Dance Festival scheduled for June 20-23 and June 27-30 at the Byham Theatre.

Co-sponsored by The Pittsburgh Dance Council

SUNDAY, JUNE 16**Point State Park Stage****Brownie Mary**

Mixing rock, funk, folk, and alternative beats, Brownie Mary is a four-piece eclectic band that combines tight harmonies, catchy lyrics, and a fresh, upbeat sound. The band achieved "instant" fame when they won the coveted Graffiti Rock Challenge in 1994. A debut CD, "That's Me," ensued in November, 1994, garnering rave reviews for its eleven original tunes.

MONDAY, JUNE 17**Point State Park Stage****Chris Smither**

Chris Smither is a guitar virtuoso, a songwriting genius, a performing whirlwind. With tunes like Bonnie Raitt's "Love Me Like A Man" and "I Feel The Same" to his credit, Smither is clearly one of America's most distinctive singer/songwriters.

TUESDAY, JUNE 18**Point State Park Stage****Hart Rouge**

Michelle, Paul, and Suzanne Campagne's work bears the influence of a variety of artists from James Taylor to Ricki Lee Jones. Mix these influences with a healthy dose of French chansoniers and incredible vocal harmony, and HART ROUGE emerges. This Canadian contemporary folk music group has toured France, Estonia, Sicily, the United States, and Canada and has won the hearts and ears of contemporary folk enthusiasts around the globe.

This performance is part of the Pittsburgh Quebec Festival, a year-long celebration of the art and artistry of Quebec, generously supported by the Quebec Government.

WEDNESDAY, JUNE 19**Point State Park Stage****Tish Hinojosa**

Criss-crossing musical borders is Tish Hinojosa's specialty; she is equally at home with 60's pop, country-tinged soul, folk, Latino-cumbia, and honky-tonk. Over the years, Hinojosa has perfected a distinctive style and emerged as an artist who has been praised by admirers from the Cowboy Junkies to Linda Ronstadt.

THURSDAY, JUNE 20**Point State Park Stage****Robbie McCauley**

Inside the Edge Series, See Page 14.

FRIDAY, JUNE 21**Point State Park Stage****Lenny Gomulka and The Chicago Push**

In celebration of the St. John's Eve tradition (Summer Solstice), Lenny Gomulka closes an all-day polka party featuring polka bands from Western Pennsylvania, ethnic dance groups, and an invitation to POLKA IN POINT STATE PARK!!

SATURDAY, JUNE 22**Point State Park Stage****The Flirtations**

BACK BY POPULAR DEMAND AFTER THEIR 1994 FESTIVAL PERFORMANCE !!

Seen in the Jonathan Demme feature film "Philadelphia," The Flirtations have been bringing audiences and critics to their feet since they started singing together seven years ago. Appearances on National Public Radio, HBO, Donahue, and Good Morning America have introduced an ever-growing legion of fans to the remarkable music of the world's foremost gay & lesbian acapella trio.

SUNDAY, JUNE 23**Symphony Stage****Take 6**

Join this pioneering vocal group that has singularly contemporized acapella singing, exerted tremendous influence on modern pop, and captured five Grammy Awards as they close the 1996 Festival with a roof-raising performance. This sextet has captured four consecutive Best Jazz Vocal Group honors in the prestigious Downbeat reader's and critic's poll and has recorded with a vast array of artists from James Taylor to Branford Marsalis. Take 6 can be heard on the soundtracks to Spike Lee's *Do The Right Thing*, John Singleton's *Boyz in the Hood*, and Warren Beatty's *Dick Tracy*.

Sponsored by Diet Pepsi

Urban cycles of decline, decay, and abandonment followed by rebirth through rehabilitation, renovation, and reconstruction may appear to be natural processes. In fact, however, the fall and rise of cities are consequences not only of financial and productive cycles and state fiscal crises, but also of deliberate social policy.

t's more high-tech. They changed downtown. They changed the buildings to more high-tech. There are a lot of families that were families in and computers and all that other stuff you find yourself out of work. The buildings changed, but the employment is what's most important.

Downtown never was a social space.

How many times has Pittsburgh been saved? Each one of these renewals is like a repetition in a way. You can read about that in the history books.

POINT STATE PARK STAGE

FRIDAY, JUNE 7

12N-1:00

Civic Light Opera Celebrates the Arts Week-Corporate Competition Finals

Finalists from the top corporate teams meet after a week-long competition to determine the winning talent of Pittsburgh's corporate community!

6:00-7:00

The Jazzabels

7:30

Maura O'Connell

See Headliners, Pages 12-13.

SATURDAY, JUNE 8

2:00-3:30

Cotton Club Revisited featuring Etta Cox

Presented in association with Mellon Jazz Festival in celebration of the 50th Birthday of the Civic Light Opera!

4:00-4:45

The Abbey Singers

This vocal sextet specializes in acapella music and performs a unique variety of works from early medieval and Renaissance to spirituals, jazz and the music of Broadway.

5:00-5:45

Invoice

This is acapella at its finest. Don't miss this ensemble's stylized interpretations of your favorite jazz and pop standards.

6:00-7:00

Renaissance City Choirs

The Renaissance City Men's and Women's Choir is proudly celebrating their eleventh season performing in the Steel City. As a member of GALA (Gay and Lesbian Association of Choruses), the RCC strives to present positive gay images through the advancement of musical arts in the Greater Pittsburgh area.

SUNDAY, JUNE 9

CALLIOPE/SMOKY CITY FOLK FESTIVAL AT THE THREE RIVERS ARTS FESTIVAL!!

1:00-1:45

Road To The Isles

Pipe music, dance, and folksong traditions of Scotland and Ireland. This quartet features George Balderose, Richard Hughes, Mary Conroy, and Bridget Regan.

2:00-2:45

Ernie Hawkins & Rodger Montgomery

Hawkins and Montgomery have been playing together for years as an acoustic duet or in bands. This remarkable duo's work covers the blues in every conceivable form.

3:00-3:45

Coal Country Cloggers & The Beaver Creek Bluegrass Band

Clogging is the country cousin of tap dancing, and the Coal Country Cloggers are acclaimed for their interpretations of traditional clogging and their innovative explorations of the dance form. Their energetic performance of award-winning choreography educates, inspires and thoroughly entertains. The Beaver Creek Band, Western Pennsylvania's premiere bluegrass band, joins Coal Country Cloggers.

4:00-4:45

Guaracha

Time to Dance! Pittsburgh's premiere Latin band, plays pungent salsas, merengues, cumbias, and lambada. The bewitching rhythms of Puerto Rican and Cuban Salsa dance music. Hot and spicy with a dollop of Latin beat.

5:00-5:45

Umoja

Bring the entire family and enjoy the traditional African sounds of Djimbe drums, Ngoma drums and Conga drums. Umoja specializes in traditional and neo-traditional African drumming, singing, and dance highlighting Eastern and Central African styles. Don't forget YOUR percussion instrument.

6:00-7:00

Caribbean Vibes-Workshop Tent

Steel drums originated in Trinidad-Tobago. Made of 55 gallon oil drums, the pans of many tones are tuned to various pitches. Caribbean Vibes was formed in 1988 to explore and perform with these unique instruments along with a regular drum set, other percussion and a singer.

7:30

Saffire - The Uppity Blues Women

See Headliners, Pages 12-13.

MONDAY, JUNE 10

12N-1:00

Mon Gumbo

Pittsburgh Post-Gazette editorial cartoonist Tim Menees plays devilishly chaotic keyboards in this zydeco band. They play a happy melange of Looziana Cajun tunes and lively two-steppers and waltz-rhythms.

6:00-7:00

Tom Green

Pittsburgh's best and brightest in Contemporary Christian music.

7:30-8:45

Greg & Rebecca Sparks

See Headliners, Pages 12-13

TUESDAY, JUNE 11

12N-1:00

Zephaniah

Funky, bluesy, soulful, rootsy reggae rhythm played by a powerhouse of mystical musicians mixing a blend of serious danceable melodies.

6:00-7:00

African-American Drum and Dance Ensemble

Pittsburgh's most prominent African music and dance company.

7:30

Ethnic Heritage Ensemble

See Inside The Edge, Page 14.

WEDNESDAY, JUNE 12

12N-1:00

Ploughman's Lunch

Backbeat with a brogue. One of Pittsburgh's top live acts with a successful new CD "Paddy's Got A Brand New Bag" on Blue Duck Records.

6:00-7:00

Hipster Dufus

The music is Alternative Pop led by former Hector in Paris frontman Philip Harris. The band's new CD *Slow Children At Play* was released to rave reviews for its fresh sound and rich four-part vocals.

7:30

Squonk Opera

See Headliners, Pages 12-13.

THURSDAY, JUNE 13

12N-1:00

Charged Particles

This trio's repertoire is a diverse mix of jazz styles, blending together elements from Latin music, classical, funk and more.

FRIDAY, JUNE 14

12 Noon

Shades

With an exclusive musical format emphasizing funkier, smoother, and more soulful modern contemporary jazz, SHADES captives and moves its listeners. This solid, creative, and dynamic ensemble features: Kevin Stewart, Grieg Shrock, Dan Limpert, Tori Walker, Jay Constable, and Jonathan Cameron

Sponsored by Mellon Jazz Festival

6:00-7:00

Water Shed

Water Shed is an instrumental quintet consisting of reed, guitar, cello, bass and drums. Their music has been described as "...animated, skillfully rendered avant-fusion" (Cadence Magazine). With material that runs the gamut from ballads to blistering improvisation, Water Shed is one of the most dynamic musical groups in Pittsburgh.

7:30

Henry Threadgill & Make a Move

See Inside The Edge, Page 14.

Co-sponsored by Mellon Jazz Festival

I only take the Parkway.

When you're in High School you're taught that your community is basically your neighborhood. It's a bit more complicated than that now with every new group that comes along. Obviously there is a new concept of what a community is. For one thing, there is a non-geographic concept of what a community is.

We used to say "meet at the pit, or the gully next to the main sewer pipes", or a place in the woods. It was dirty but we didn't care, we were young, we were boys. We would make up code names for the places we'd go--like one place in the woods we called Hawaii. And we'd say "let's all meet there tonight and do a party". Later we'd disburse and go out into the public or whatnot, but we had our private little spaces. The cops knew that's where we went, but because there were woods, they really couldn't do anything. Cars couldn't go there so they'd have to patrol it on foot and we'd see their flashlights. Usually only your friends and people you knew would be there.

SATURDAY, JUNE 15

4:00-4:50

The Gaugh Quartet

5:30-6:45

Squonk Opera

"Squonk Alert" to unsuspecting festival goers! Musical, visual and dramatic arts "collide" when Pittsburgh's own audacious, frantically eclectic, theatrically ecstatic Squonk Opera takes the stage.

7:30

Pittsburgh Dance Festival

See Headliners, Pages 12-13.

SUNDAY, JUNE 16

4:00-4:45

PSOAS

Driving, intricate, compelling, tribal, cathartic - PSOAS has toured extensively with Rusted Root, and opened for such national headline acts as Johnny Clegg and Savuka, and Vinx.

5:00-5:45

Robespierre

Emerging from the swamps of deep Southern Louisiana and the rusting steel empire of Western PA, Robespierre plays rock and roll that burns like molten steel flavored with Tabasco sauce.

6:00-6:45

Bitter Delores

Formed in 1994, this alternative band has been winning praises for its strong musicianship and extraordinary live performances. Two recordings to their credit and numerous awards and showcase appearances make this band an up and comer.

7:30

Brownie Mary

See Headliners, Pages 12-13.

MONDAY, JUNE 17

12N-1:00

Carol Lee Espy

On the forefront as a Pittsburgh singer-songwriter to watch. Carol is poised to make her national mark with a compelling lyricism and easy-as-morning vocals that are a welcome respite from mainstream music.

6:00-7:00

Front Street

One of Pittsburgh's finest acoustic trios featuring the best in contemporary folk and traditional music.

7:30

Chris Smither

See Headliners, Pages 12-13

TUESDAY, JUNE 18

12N-1:00

Guitar Shorty and the Hawks

With a four year stint with James Brown under his belt, Guitar Shorty joins the Hawks to bring an exciting brand of roots and contemporary R&B to the Festival.

6:00-7:00

Leslie Smith

Smith draws upon her southwestern Pennsylvania roots and the traditional and bluegrass music in and around Pittsburgh. The singer/songwriter's recordings have earned wide-spread praise, including Billboard, noting the "lonesome, wild streak in her vivid, precision-lathed lyrics."

7:30

Hart Rouge

See Headliners, Pages 12-13.

WEDNESDAY, JUNE 19

12N-1:00

Bill Miller

Calling his music "alter-Native American," it's an unforgettable mix of hard rock, New Age, eerie tribal chants, and Native American drumming.

6:00-7:00

Bill Miller

7:30

Tish Hinojosa

See Headliners, Pages 12-13.

THURSDAY, JUNE 20

12N-1:00

Jambo

This Pittsburgh based African pop band combines Afro-Cuban music, European electronic sounds of the 60's, and traditional African influences.

6:00-7:00

Jimmy Ponder Trio

Jazz guitarist Jimmy Ponder plays with riveting technical proficiency and incredible musicianship.

7:30

Robbie McCauley

Co-sponsored by The Pittsburgh Dance Council

See Inside The Edge, Page 14

FRIDAY, JUNE 21

12N-1:00

TBA

6:00-7:00

The Nutones

One of Western Pennsylvania's premiere polka bands. You can't help but dance when you hear The Nutones!

7:30

Lenny Gomulka and the Chicago Push

See Headliners, Pages 12-13.

SATURDAY, JUNE 22

4:00-4:45

Orquestra Tropical

Orquestra Tropical plays the entire spectrum of Latin music: the newest Cuban and Puerto Rican salsa and merengue to pop, mambo, and mariachi.

5:00-5:45

Guaracha

Time to Dance! Pittsburgh's premiere Latin band, plays pungent salsas, merengues, cumbias, and lambada. The bewitching rhythms of Puerto Rican and Cuban Salsa dance music. Hot and spicy with a dollop of Latin beat.

6:00-7:00

Barbara Blue Blues Band

Native Pittsburgher Barbara has had the blues since the day she was born. She performs all over the northeastern U.S. with her own blues band, formed in 1989.

7:30

The Flirtations

See Headliners, Pages 12-13.

SUNDAY, JUNE 23

4:00-4:45

Robbie McCauley

"What's Goin' On?" Talkin' About Marvin Gay's Question McCauley's stories about local stories. An afternoon of narrative and dialogue coming out of workshops conducted by Ms. McCauley over the Festival's closing weekend.

See Inside The Edge, Page 14.

5:00-5:45

The Curtis Lewis Ensemble

6:00-7:00

Lamont Shields and the Homecoming Concert Mass Choir

We were hanging out in the park and the whole community banded together and said we were dangerous when actually we kept the park clean for other people. We went there to meet--as a place just to hang out, not to do drugs. But the community actually got together to have a town meeting to kick us out and ban us. They were thinking about putting up a fence with barb wire and all. We said well "where do you want us to go, we don't have anywhere to go", so they gave us a community center but it had police in it and parents as well. So they never solved the problem. They always said "we're going to give you some space to meet" but they wouldn't do it, or if they did, it wasn't conducive to kids meeting there.

There was a small gay pick-up area down near Craig Street and Forbes but what they did was to thoroughly repress it. Now there are signs that say you can not drive down this street between one and six in the morning. They actually have curfews for when you can drive there. There's nothing there anymore.

12 Pittsburgh Post-Gazette Acoustic Stage

FRIDAY, JUNE 7

5:00-5:45

Leslie Smith

Smith draws upon her southwestern Pennsylvania roots and the traditional and bluegrass music in and around Pittsburgh. The singer/songwriter's recordings have earned wide-spread praise, including Billboard, noting the "lonesome, wild streak in her vivid, precision-lathed lyrics."

SATURDAY, JUNE 8

2:00-2:45

Swing Shift

This sextet blends traditional swing music with stringed instruments and harmony vocals in a style some call "folk swing." Their lively stage show is known for musical energy, humor and spontaneous jitterbugging!

3:00-3:45

Pittsburgh Banjo Club

Happy days are here again! Nobody can be sad when a banjo is playing. So come-along and sing-along to everything a-strummin' from Dixieland to polkas.

SUNDAY, JUNE 9

2:00-2:45

Renaissance City Winds

Since its founding in 1975, The Renaissance City Winds has become one of Pennsylvania's foremost chamber ensembles. Hailed by *The New York Times* as "expert wind players," the ensemble tours throughout the East and Midwest.

3:00-3:45

River City Brass Band Trombone Trio

Chamber music in unique arrangements from three of Pittsburgh's finest brass players.

MONDAY, JUNE 10

5:00-5:45

Jimmy Ponder

One of Pittsburgh's jazz treasures. Guitarist Jimmy Ponder plays with riveting technical proficiency and incredible musicianship.

TUESDAY, JUNE 11

5:00-5:45

Jim Farquar Trio

Truly a treat! Jazz guitarist Jim Farquar leads this amazing ensemble's performance marked by superior musicianship and original compositions.

WEDNESDAY, JUNE 12

5:00-5:45

Live Music Trio

Some of Pittsburgh's most gifted musicians present an after-work program of chamber music.

THURSDAY, JUNE 13

5:00-5:45

Steve Suarez

A native Long Islander, Suarez spent 17 years as a classical ballet dancer. More recently he has been a vocalist and bass player with the Tequila Mockingbirds and The Ingredients, playing rock and roll.

FRIDAY, JUNE 14

5:00-5:45

Pittsburgh Songwriters Association

These folk artists will delight Pittsburgh acoustic fans with their many contemporary originals.

SATURDAY, JUNE 15

2:00-2:45

Barbara Blue and Something Completely Different.

A change of pace for the city's foremost singer of the blues you love best.

3:00-3:45

Dan and Matt Kambic

These two brothers have been appearing at all the acoustic venues around Pittsburgh since the early 80's. Their original material is influenced by early James Taylor and Dan Fogelberg.

SUNDAY, JUNE 16

2:00-2:45

Bill Purse

Chairman of the Duquesne University Guitar Department and nationally recognized electronic music and MIDI clinician, Bill Purse will present a unique solo guitar performance.

3:00-3:45

Kris Kehr & Bill Stetz

This Central Pennsylvania acoustic duo presents an eclectic repertoire of original songs, swing, bluegrass and blues.

MONDAY, JUNE 17

5:00-5:45

Drums of West Africa in America

A professional ensemble with over 25 years of experience in bringing African music and culture to community audiences throughout the United States.

TUESDAY, JUNE 18

5:00-5:45

Pahanish

Dave and Tammy Pahanish are an acoustic duo specializing in popular music from the 50's to 80's and original music.

WEDNESDAY, JUNE 19

5:00-5:45

Jim Perrett

Jim has been playing acoustic guitar and harmonica for over two decades, influenced by artists from Billie Holiday to Woody Guthrie. His music covers both improvised and originally arranged versions of folk, blues and swing songs.

THURSDAY, JUNE 20

5:00-5:45

Cajun Fever

Pittsburgh's hottest cajun band performs energetic renditions of Cajun classics, seasoned with some sultry Zydeco. Catch the FEVER!

FRIDAY, JUNE 21

5:00-5:45

Boilermaker Jazz Band

Biograph Recording Artists, the Boilermakers play the authentic New Orleans style that originated in the early 1900's, beating out uplifting street parade sounds, spirituals and American jazz standards.

SATURDAY, JUNE 22

2:00-2:45

SPEBSQA-Greater Pittsburgh Chapter

The Society for the Preservation and Encouragement of Barbershop Quartet Singing in America! Simply the best!

3:00-3:45

On with the Show

The best of Broadway! Join this stellar group of Pittsburgh singers for an afternoon of American Musical Theatre tunes.

SUNDAY, JUNE 23

2:00-2:45

Frenchy Burrito & The Folk Pistols

The Folk Pistols are a post-modern industrial lo-fi folk punk-a-delic trio which covers obscure songs and Frenchy's off-beat originals.

3:00-3:45

Danny Holmes

One of the most influential and successful performers from Upstate New York, Danny has appeared in concert with Melissa Manchester, Dave Mason and numerous other national artists.

CNG Plaza Stage

All performances are from 12 noon to 1:00 pm

FRIDAY, JUNE 7

Walt Harper

For many Pittsburgh jazz lovers, Walt defines "cool." His stylish arrangements of the great standards are uncluttered and eloquent.

MONDAY, JUNE 10

Carnegie Brass Quintet

Carnegie Brass Quintet's active interest in contemporary music has led to a number of works written specifically for the ensemble.

TUESDAY, JUNE 11

Tony Janflone, Jr.

Janflone is a superb jazz guitarist whose performance and recording credits include work with In Sync, Modern Times, and Kenny Blake.

WEDNESDAY, JUNE 12

Valeska

This unique ensemble showcases classical and contemporary music arranged for string quintet.

THURSDAY, JUNE 13

Ray Ryan's New Orleans Riverside Jazz Band

Don't miss the Three Rivers Arts Festival debut of this top-notch Dixieland band!

FRIDAY, JUNE 14

Ceremonial Brass

One of Pittsburgh's most talented brass chamber ensembles, this professional quintet is comprised of players from the regions finest orchestras and ensembles.

MONDAY, JUNE 17

Catch 22 Guitar Quartet

Duquesne University faculty members, Bill Purse, Ken Karsh, Jeff Mangone and Mark Koch present the finest in jazz guitar arrangements.

TUESDAY, JUNE 18

Birmingham Brass Trio

The trio's aim is to provide a different backdrop from traditional brass performance.

WEDNESDAY, JUNE 19

Jim Farquar Guitar Trio

Only three guitars or is it? You won't believe your ears with this powerhouse of guitarists!

THURSDAY, JUNE 20

Renaissance City Winds

One of the most recognized professional chamber ensembles in the eastern United States.

FRIDAY, JUNE 21

Pittsburgh Brass Quintet

The Pittsburgh Brass Quintet are classical musicians that excel in diverse and entertaining music.

Our meetings were always secret so we had to go to a part of the city that we normally wouldn't frequent. For a while Squirrel Hill was our terrain and then East Liberty. Each time we found a new place it was as if it was built and designed for us; it was as if the whole city was our home. Perhaps it was the necessity for secrecy that made the strange streets and restaurants feel like ours.

SATURDAY, JUNE 8

Meredith Monk

Byham Theatre, 8:00 P.M.

Since the late 1960's, Meredith Monk has been at the forefront of the interdisciplinary approach to performance. A singer/composer director/ choreographer/filmmaker, Ms. Monk is a seminal artist in a process that synthesizes all the disciplines to discover new dimensions where her vocal and instrumental music meets with ritual, movement, object, light and film. Among Ms. Monk's numerous awards are two Guggenheim Fellowships, a Brandeis Creative Arts Award, two Villager Awards for composition, a Bessie for Sustained Creative Achievement, the National Music Theater Award in opera, sixteen ASCAP Awards for Musical Composition, three Obies for Theater, the Rockefeller Fellowship for Distinguished Choreography and First Prize for Performance Programming from the Corporation for Public Broadcasting.

A collaborative presentation of the Three Rivers Arts Festival and the Pittsburgh Dance Council. Tickets: 456-6666



TUESDAY, JUNE 11

Ethnic Heritage Ensemble

Point State Park Stage, 7:30 P.M.

Breaking the habits of boredom and pushing beyond nostalgia into the present for almost 20 years, the Ethnic Heritage Ensemble fuses traditional African rhythmic and melodic sensibilities with popular African-American musical expression. A unique instrumentation includes trap drums, Latin and African hand-percussion, digeridoo, bass clarinet, saxophone, and trombone. The EHE imparts an ancestral wisdom and conjures an energy and spark rarely encountered in contemporary music. The Ensemble features Kahil el'Zabar, Joseph Bowie, and Edward Wilkerson, Jr.



Pittsburgh is a very neighborhood oriented place...very sort of provincial. There are different neighborhoods that have their own business district. If you wanted to, you could really stay in your neighborhoods and do all your food shopping there, go to restaurants, go to bars, and that's really the way the city was set up. There were industrial pockets and the neighborhoods would grow up around that, needing to sustain itself. In Pittsburgh it's like you have a lot of small downtowns.

FRIDAY, JUNE 14

Henry Threadgill & Make A Move

Point State Park Stage, 7:30 P.M.

Multi-instrumentalist Henry Threadgill is regarded as one of the most important composers in modern music. Threadgill employs a universal approach to instrumentation that integrates the sounds, sensibilities, and languages of musicians from many different cultures. He composes for chamber groups and full orchestra, as well as jazz oriented ensembles. Threadgill was a founding member of the ground-breaking and influential trio AIR in the 70's. Threadgill's last recording, "Song Out Of My Trees," was praised as a 5-star recording and Disc Of The Month in CD Review, June '94. His recording prior to that, "Too Much Sugar For A Dime," placed second on the Village Voice Jazz Album of Year poll for 1993. Threadgill has collaborated with choreographer Alice Farley on a project which premiered at La MaMa in New York City in the fall of 1995. Threadgill has also showcased his music at the Knitting Factory, New York City. Co-sponsored by Mellon Jazz Festival

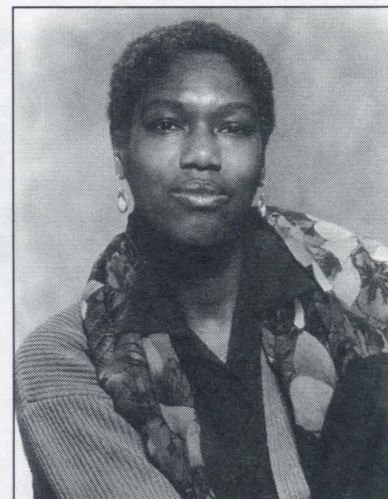


THURSDAY, JUNE 20

Robbie McCauley

Point State Park Stage, 7:30 P.M.

Theatre/performance artist and writer Robbie McCauley is the recipient of the 1992 OBIE Award for Best Play and the 1990-91 BESSIE Award for creative achievement for *SALLY'S RAPE*. Her work has been performed in New York City at The Kitchen, P.S. 122, Lincoln Center's Serious Fun!, and the Studio Museum. McCauley's performances include stories about the triumphs and challenges of her family from the late 19th century to the late 20th century. In this performance, "Mother Worked," McCauley connects the 30's and the 90's government and work. With humor and pathos, she weaves stories about connections between that time and this time; mothers and fathers; love, work, and government. In addition to her performances, Robbie McCauley will be conducting theatre and storytelling workshops throughout the weekend of June 20 - June 23.



This presentation of Robbie McCauley is one of a national series of such programs which constitute the National Performance Network (NPN), designed to increase traffic and creative opportunities for non-traditional and experimental artists of all cultural backgrounds in dance, music, theater, performance art and puppetry. The NPN is a project of New York's Dance Theater Workshop (DTW) in cooperation with Three Rivers Arts Festival and Pittsburgh Dance Council and similarly dedicated arts organizations in 38 cities across the country, all of which play an important and ongoing role in nurturing innovative work. The Network is made possible with major funding from Lila Wallace-Reader's Digest Fund (dance residencies and related S.U.R.F.F. activities); The Pew Charitable Trusts (all residency programs); Philip Morris Companies Inc. (NPN Creation Fund and related S.U.R.F.F.); The Rockefeller Foundation (S.U.R.F.F.) and the Presenting and Dance Programs of the National Endowment for the Arts (a federal agency).

I often walk through the cruising area of Schenley Park because I feel safer there. You rarely see anyone, but you know people are around.

14 HIGH SCHOOL BANNERS

High school students from Allegheny County produced banners for the Fifth Avenue Place Lobby

Kelly Allerton

Fox Chapel HS

"Something to Crow About"

\$400

Hillel Arnold

Uniontown Area HS

"On Wings of Eagles"

\$200

Amanda Barnhart

Plum Senior HS

"Culture Stew"

\$300

Kristine Behm

Beth Center HS

"Happy-Go-Lucky Monkey"

\$200

Dana Blain, Vickie Maize

Pgh. HS for the Creative and

Performing Arts

"Four Seasons"

\$300

Jacob Dambach

Freedom Area HS

"Bright Lights, Big City"

\$250

Beth Dotson, Laura Marsiglio

Norwin HS

"Carousel"

\$350

Dustin Giannopoulos

Uniontown Area HS

"Prince Stephen"

\$285

Sarah Hromack

Butler Intermediate HS

"Born Again"

\$300

Shannon Oliverio, Colleen Asper,

Erin Feth

Pgh. HS for the Creative and

Performing Arts

"Flight"

\$400

Samantha Oshetsky

Beth Center HS

"Brushes, Paints and Palettes"

\$300

Hayley Phillips

Beth Center HS

"The Piano"

\$200

Megan Renstrom

Pgh. HS for the Creative and

Performing Arts

"Mask"

\$300

Kristy Stauffer

Beth Center HS

"Mouse that Ate Cheese"

\$300

Loren Winslow

South Allegheny HS

"Wizard"

\$400



The Festival congratulates South Allegheny High School Senior Christopher Galiyas, student designer of one of this year's Festival T-shirts. Christopher entered this year's high school banner competition, and his design was such a favorite with Festival staff that we ask if he would consider adapting it for one of our official 1996 T-shirts. We know this design will be a huge favorite with Festival visitors.

We wish Christopher the best of luck in his studies next year at Edinboro University of Pennsylvania where he will major in art education and graphic design.

ARTISTS MARKET



Artists Market Information

Each year the Festival welcomes artists from all over the country with their finely crafted works to Gateway Plazas 1, 2, 3, and across the street to Gateway Plaza 4. For the third year, the Festival has expanded the weekend market to Gateway Plaza 4 to bring a wider variety of artists to Pittsburgh audiences. Five jurors selected these artists from hundred of entries. The 1996 jurors include Boris Balley, Metal Artist, Member, North American Society of Goldsmiths; Edric Florence, Woodturner, Invited Artist; Iris Parker, Photographer, Visual Arts Instructor, Manchester Craftsmen's Guild; Miriam Steward-Murrell, Weaver, Invited Artist; and Kathleen Zimbicki, Painter, Owner, Studio Z Gallery.

The Artists Market goes through several changeovers during the 17 days of the Festival. New artists arrive on the following dates:

Section 1	June 7-12	Weekend 1	June 7-9
Section 2	June 13-17	Weekend 2	June 14-16
Section 3	June 18-23	Weekend 3	June 21-23

Sometimes an area becomes suddenly popular. Attractors appear: it might be the proximity of a new, or even a rumored highway, beautiful nature, or comfortable neighborhoods. Attraction is translated into building. Sometimes the nature of the attractor remains a mystery; seemingly nothing is there (that may be the attraction!)—it might be the building itself. Suddenly clumps of office and residential towers spring up, then a church, a mall, a Hyatt, a cineplex. Another "center" is born, stretching the city to apparent infinity.

ACKNOWLEDGEMENTS

Executive Steering Committee

Deborah D. Dodds
Chairperson
Gerri Kay
Vice Chairperson
Alice R. Snyder
Vice Chairperson
Cindy Finestone
Treasurer
Michael McLean
Secretary
Jeffrey G. Boyd
Ellsworth H. Brown
Estelle Comay
Karen S. Crawford
Patricia Crawford
Ron Desmett
Martha Fairchild
Patricia Elmes Farley
Robert M. Frankel
Evelynn Hawkins
D. Stuart Horne
B.J. Leber
Greg Morris
Richard Nimtz
Karen Price
Ian Rawson
Sala Udin

Festival Staff

Jeanne L. Pearlman
Jamie Gruzka
Donna J. Garda
Mary Ann DeFazio
Harriett Mendlowitz
Kathryn Spitz
Sharon Spell
Maureen Quinn
Eric Krchmar
Leah Byer
Joanna Michaelides

Interns

Cara Appel
Christine Cote
Hannah Israel
Katherine Tunney
Antoinette Ford
Denise Lencewitz
Natalia Mager

Festival Crew

Shawn Vashaw
Greg T. Olszewski
Dan Casey
Diana Cochran
Rick McCullough
Peter Reaves
Tim Robinson

Visual Arts Crew

Erica Cryer
Lynn Kim
Kimberly Hoover
Alexa Brennan

Media Relations

arPR Public Relations
Audrey Reichblum
Mike Vargo
Points of Entry
Matthew Brown
Richard Stoner

Points of Entry

Acknowledgements

Mary Jane Jacob
Ann Carlson Project:
Magee Women's Hospital
Carol Remmick
Mary Zubrow
Lonnie Graham Project:
Alma-Illy Medical Center
Carol Duse
Mrs. Audrey James
Geraldine Massy
Priscilla Briggs
Josh Dorfsuan
Fabric Workshop
Christine Roberts
Marion Stroud

Lonnie Graham, Sr.
Mr. Hilton Karioki
Wanjiru Karioki
Iris Parker
Vivian Poe
Pyramid Atlantic
Helen Fredrick
Neil Russell
Mr. Floyd Simmons
Kamilla Sych
USIA Nairobi
Marianne Scott
Western Pennsylvania
Conservancy
Jeff Gerson

Michelle Illuminato Project:

Emily Blair
Commercial Textiles, Corp.
Steffi Domike
Jon Dunn
Fab Factory
Foreland Street Studio
Forward Shady Apartments
Shirley Kahn
Wednesday Morning
Breakfast Club
Monday Night Game Players

Jewish Community Center
Mah Jongg Group
Sharon Rubin
Murray Towers
Neighbors
Whoopee Group
New Heritage, Inc.
Jan Carr
Shirley Pierce
Jenn Phillips
Riverview Apartments
Jeff Elinoff
Carlos Szembek
Vintage
Marilyn Crouch-Kraitman
Domino, Mill, and Uno
Players

Daniel Martinez Project:

Gibran Evans
John Martine
North American Fence Co.
Pennsylvania Prison Society
Pittsburgh Public Schools
Alfonso Everett
Rachael Girson
William Nicholson
Bob O'Keefe
Rita Pierno
David Stein
Monica Tillman
Georgia Vassilakis
Cheryl Weisband

Fred Wilson Project:

Peter Coppin
David's Gallery
David Ingold
Steffi Domike
Tim Fisherkeller
Ray Anne Lockhart
Maple Hill Interiors
Riverhouse Antiques
Lillian Goldsmith
Joedda & Ben Sampson
Tim Swecker
Western Pennsylvania
Historical Society
Patricia Mitchell
Steve Zupchich
Group Material
Jeffrey Boyd
Ann Devlin

Acknowledgements

Allegheny High Lift
Allegheny County
Commissioners
Allegheny County Bureau of
Cultural Programs
Diane Allison
The Arcade Shops at Fifth
Avenue Place
Janet Pilewski-Bretti
Axiom Management
Anita Falce
Susan Niedbala
BecTec Production Services
Tom Beck
Beckwith Machinery Company
The Carnegie
Controller's Office
Museum of Art
Office of the President
Treasurer's Office
City of Pittsburgh
Office of the Mayor
Special Events Committee
City Council
Department of Public Works
John Samoski & the
Point State Park Crew
Department of Parks &
Recreation
Public Safety
City Theatre Company
Marc Masterson
Tony Ferrieri
Concept Art Gallery
Ruth Cover
Joan Croft
E.V. Bishoff
Harry Burns
Mark Vey
Flexitrol Lighting Company
Bob Miller
Fort Pitt Museum
Bob Trombetta
Norma Frederick
G.E. Modular Space
The Gleason Agency
E. J. Gottlieb
Grant Paul Design
Sally Pennline
Linda Scharf
Guest Trailer Rentals Inc.
Warehouse on Wheels
Marlene Hart
Nancy Jessop
KDKA-TV
Bruce Kaplan
Todd Galloway
Lorraine Snebold

Mary Anne Keegan
Russ Kemerer
Lascaux Gallery
Lincoln Property Company
Mike Murray
Sunny Pickering
Melissa Pearlman
Marie Peterson
Pittsburgh Cultural Trust
Carol Brown
Murray Horne
Ellen Still
Pittsburgh Dance Council
Carolelinda Dickey
Amy Dupain Vashaw
Pittsburgh Filmmakers
Gary Kaboly
Pittsburgh Post-Gazette
Debra Alward
Susan Aschenbrenner
Janice Crile
Karen Johnese
Pittsburgh Sports & Festivals
Federation
Judy Kelly
Craig Merritt
Mark Pollock
PPG Industries
Richard Marks
Kim Schreck
Arthur Reitmeyer
Kathryn Sitter
Larry Snyder
Stanwix Parking Inc.
Ann Tayman
Three Rivers Rowing
Association
Michael Lambert
Marlene Tinley
Don Tomasic
Trizek Properties Inc.
Deb Donley
Jack Roach
Trombino Piano Gallerie
Vicki Miller Bongiorno
Andy Warhol Museum
Mark Francis
Marjorie King
Watson Engineers
Amy Wilson
Toby Wolken
Steve Zupchich

To be lost. How frightening. To be safely lost. How wonderful. We have begun to build cities that are too easily solved. There is no mystery, no imaginative lure, no texture in the blank facades, the empty and expressionless faces of banks or other corporate structures. This plus no candy, book or sweet shops means that when the bank shuts and the IBMers gas on home, the city drops dead. You can skate through those places at 50 miles an hour, for there is nothing to see, nothing to wonder or linger over. There is no bafflement.

When they sing "This Land Is Your Land" at the Civic Arena it just brings tears to my eyes. Wow. You know we just all have so much to get from each other, if you just look around wherever you are and decide to interact—that changes your life. Just these thing when we are all together somewhere can change your life.



Three Rivers Stadium

It's up to an individual to enjoy the crowds. Only certain people can get into it I think. You can't ask the city to do it for you.

What's Happening

Gallery 937, 937 Liberty Avenue

Gallery Hours: Wednesday – Saturday, 11 a.m. – 3 p.m.

Saturday, June 1 – Thursday, June 27

Opening Reception: Saturday, June 1, 5:30 p.m. – 8:00 p.m.

One person show: Ron Jesiolowski, *Anthropodic Expeditions*, oil paintings and pen and ink drawings.

Curator's Choice II: Selected work by Carol Amidi, John Dorinsky, Aaronel deRoy Gruber, Elaine Morris, Sigrid Shafagh, and Catherine Weisz. Curator: Robert Raczka, Assistant Professor of Art and Gallery Director, Allegheny College.

Thursday lecture series: 12 noon – 1:00 p.m., free and open to the public. Every Thursday during the run of the show an artist will give a short presentation in the gallery.

Pittsburgh Dance Festival

Six local choreographers and Pittsburgh Dance Council's Choreographers Continuum XIII present 8 shows over 2 weekends at the Byham Theater. For tickets call: 355-0330.

Renaissance City Choirs

In Concert, Saturday June 15, Byham Theater 8:00 p.m. Tickets 456-6666.

Adrienne Heinrich

Poetry in Motion presents the words of eight African American women poets who live in the Pittsburgh area. Placards installed on the 800 Port Authority Transit buses which serve the greater metropolitan area, will allow riders to enjoy a momentary respite from the bombardment of everyday images. Instead, commuters will journey to the soul of the poet. Two live performances will be presented in the Steel Plaza T Station, located at the Grant Street entrance. Readings will be at 2 PM on Sunday, June 9 and at 2 PM on Saturday, June 15.

Forbes Field to Coors Field: A Classic Ballparks Exhibit

The Three Rivers Arts Festival is proud to host this unique exhibition of photographs of classic baseball parks, old and new.

The exhibit include examples of classic ballpark architecture, including Pittsburgh's own Forbes Field, home of the Pittsburgh Pirates from 1909 to 1970. Forbes Field was a great park, considered to this day to be one of the finest, if not the finest ever built.

The photographs of Forbes Field are rare color views which, for the most part, have never been on public display. The other photographs and renderings represent some of the finest new ballparks designed and built over the past ten year.

Join us at Fifth Avenue Place to view these examples of baseball park architecture and take a moment to voice your opinion about the baseball architecture on our comment cards. Your card will be entered into a drawing for free tickets to a Pirate game and lots of other surprises.

The ordinary practitioners of the city live "down below, below the threshold at which visibility begins. They walk--an elementary of this experience of the city; they are walkers, whose bodies follow the thick and the thin of an urban "text" they write without being able to read it. The networks of these moving, intersecting writings compose a manifold story that has neither author nor spectator, shaped out of fragments of trajectories and alterations of spaces: in relation to representations it remains daily and indefinitely other.

My Uncle John walked through the city day after day looking for work. This is how he learned every street and alley way around. My Aunt though never figured her way around. It was her memory. When she would tell him of an incident of her youth, the story would be vivid. At the same time, she couldn't remember what she had for dinner the night before.

When I follow people I think more about where they might be going then who they are. I make a note of and describe each object they select or reject shopping. I record every gesture and the times they happen. I remember each street they follow, each turn they make and each hesitation. The stranger walking down the Boulevard of the Allies could be me if I watch them long enough.

The city that most people want is in Orlando, Florida and its called Disneyland.

Sometimes it's important to find out what a city is, instead of what it was, or what it should be.